



SAMPLE APPROVAL SHEET

Company Name _____

Part Number 921NIRPC/D28-S

Sample Date _____

APPROVED SIGNATURES		

APPROVED SIGNATURES		

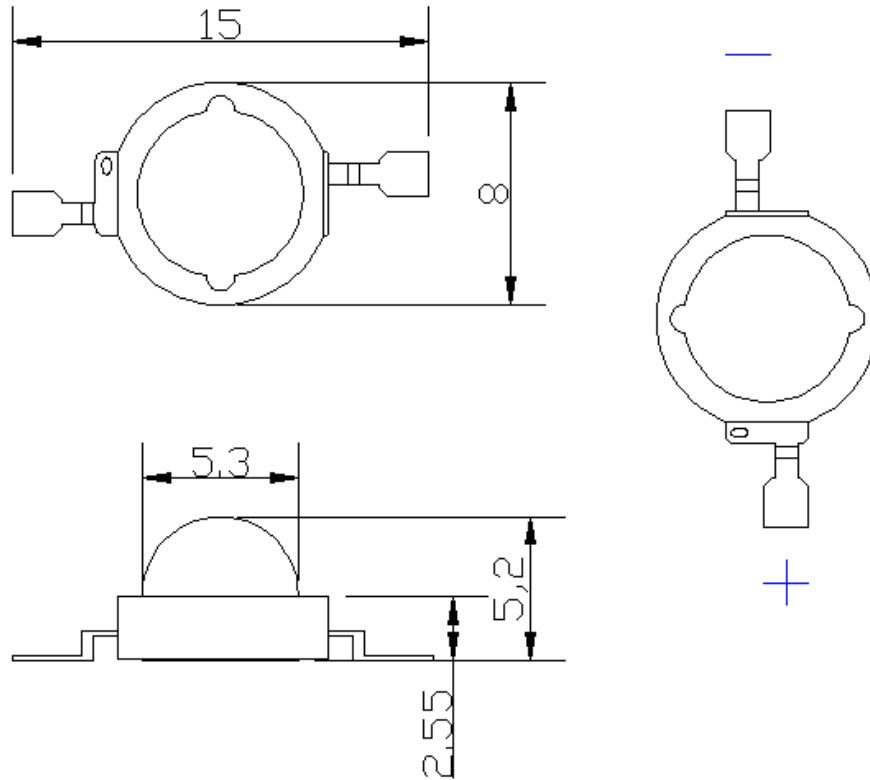
◆ K1

◆

◆ RoHS

◆

◆



.X 0.1mm .XX 0.05mm

921NIRPC/D28-S	AlGaAs	Infrared	



!

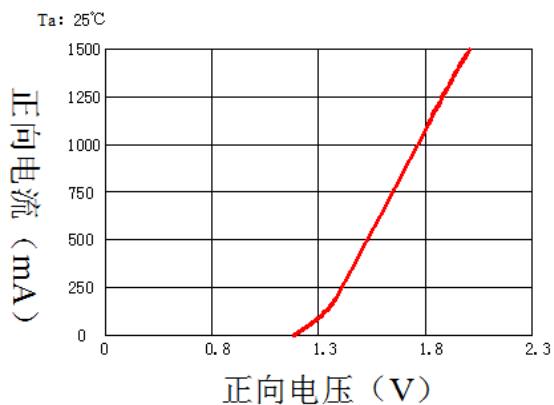
	PD	1500	mW
	IFP	1200	mA
	IF	750	mA
	Topr	-25 to +80	
	Tstg	-25 to +100	
	Tsld	240 /10	

!

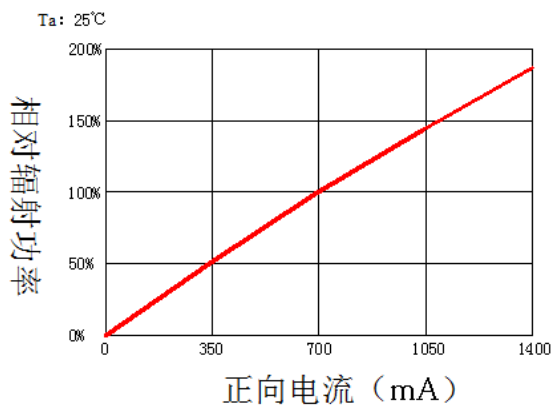
	Symbol	Min.	Typ.	Max.	Unit	Test Condition
	Po	280	330	----	mw	IF=600mA
	2 !	----	120	----	Deg	
	p	840	855	865	nm	IF=600mA
		----	40	----	nm	IF=600mA
	VF	1.5	1.7	2.0	V	IF=600mA
	IR	----	----	10	A	VR=5V



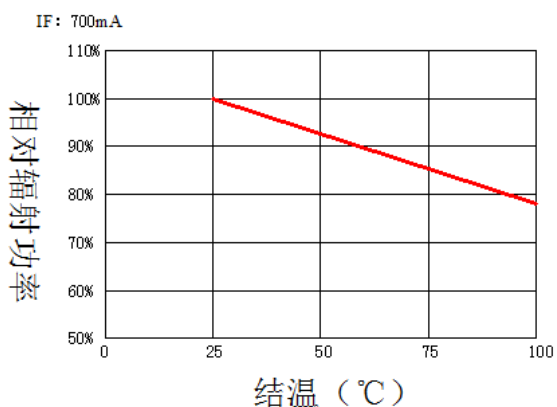
■ 正向电压VS正向电流曲线



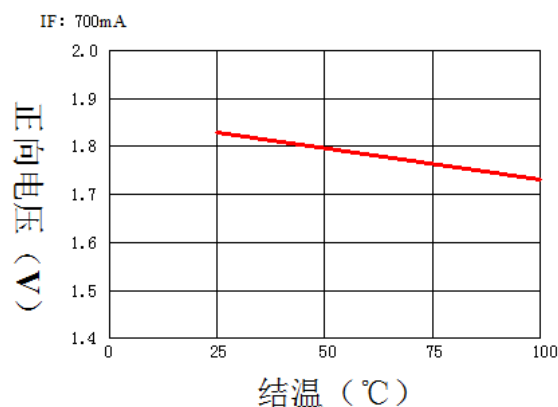
■ 正向电流VS相对辐射功率曲线



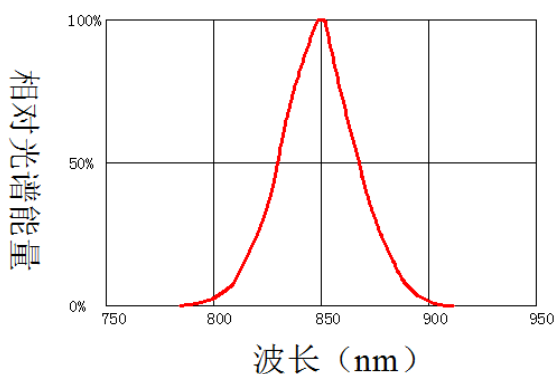
■ 结温VS相对辐射功率曲线



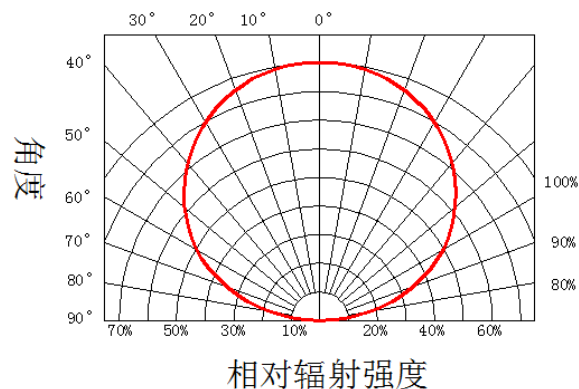
■ 结温VS正向电压曲线

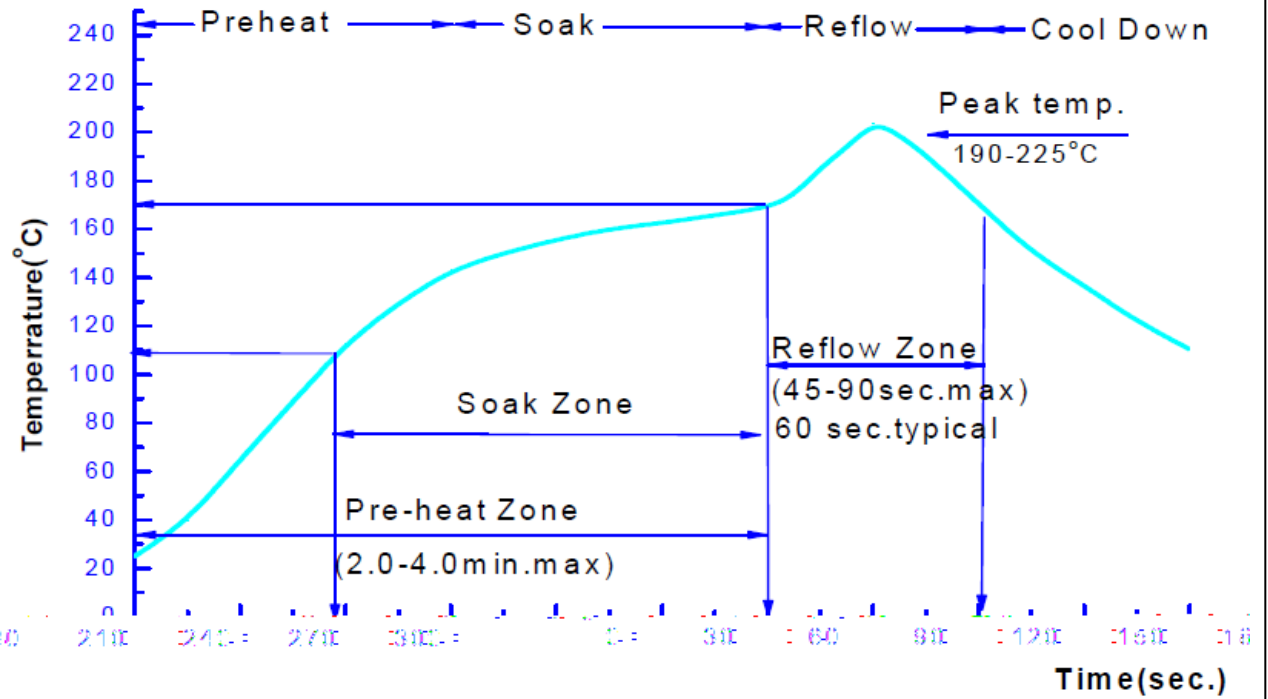


■ 波长VS相对光谱能量曲线



■ 相对辐射强度VS角度曲线





	"
	% !
	"
	%
	!!
	"
	%
!	%

)) ")
 " %
 !
 " 43
 !
 ! % !
 43 LED
 ! LED
 LED

	30%	40%	50%	60%	70%	80%	90%
30 ℃	9	5	4	3	1	1	1
25 ℃	12	7	5	4	2	1	1
20 ℃	17	9	7	6	2	2	1

" 43
 43
 ! 43
 " 43
 !
 43 % 2 ! 43
 43 % 2 43

